

JUNG

LS1912

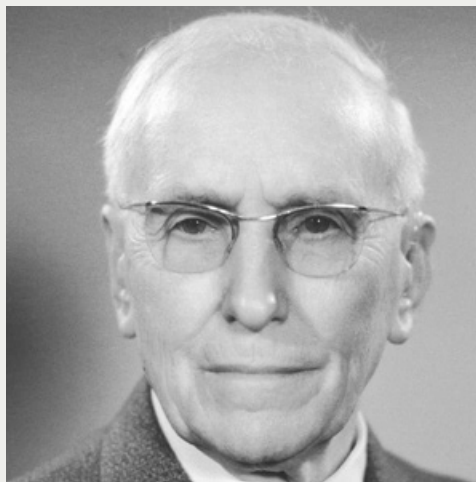




Pioneering spirit

As a pioneer of his time in 1912, Albrecht Jung laid the foundation for the JUNG success story. Ingenuity and entrepreneurial courage characterise his personality. The pursuit of progress, quality and design drive him. Fundamentals that still define the company.

MADE IN
GERMANY SINCE 1912



Albrecht JUNG
Ingenuity has a future

With this motivation, Albrecht Jung leads the company to economic success and secures its survival even in difficult times. The focus is on his patented invention, the pull switch with 1/8 rotation. His principle of a short actuating path has formed the basis for all switch designs of the company up to the present day.

Craftsmanship



For over 100 years, the name of JUNG has stood for the highest quality in technology and design – “Made in Germany”.



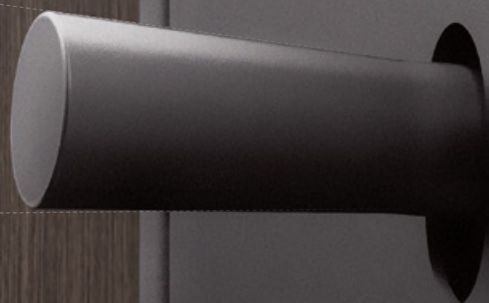
Rocker switch made of porcelain, 1960

Durability

Innovation, passion and precision define the developments from JUNG. Then, now and in the future. Sophisticated operating philosophy and clear, functional layout characterise the products.

The future must have a past in order to transmit tangible traditions into a contemporary form. Based on the JUNG switch of the early years, the LS 1912 rocker switch turns the switching mechanics into a new experience.

New interpretation

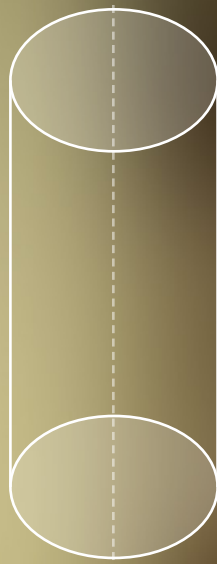


Rocker switch LS 1912, dark



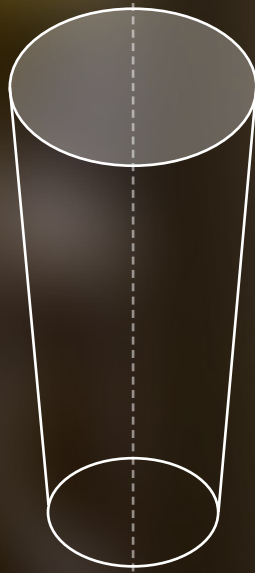
Rocker switch LS 1912, classic brass

Cylinder



JUNG transfers the years of experience in metalworking into a luxurious selection of materials – from aluminium, via stainless steel and brass to chrome. In a timelessly linear design, the LS 1912 is the result of a sophisticated design language.

Cones



Flowing, even transitions account for the subtle presence of the flush versions. The widest range of materials coalesce, individual design elements arrange themselves into a stylish collage.



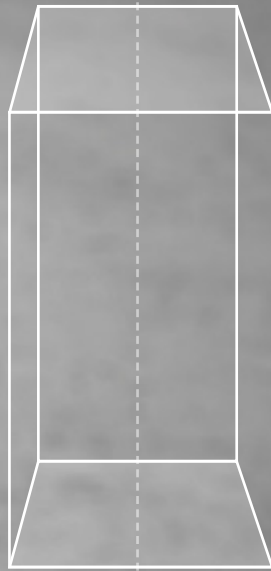
Rocker switch LS 1912, stainless steel – flush installation

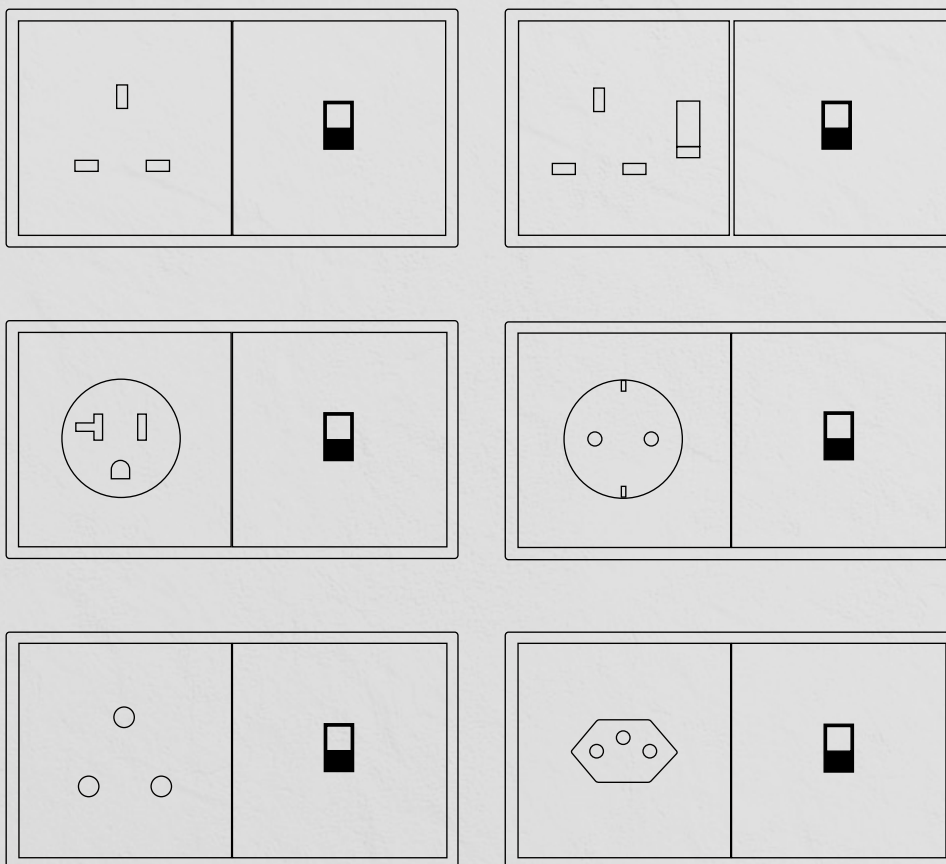
An exact line composition meets high-quality materials. Real metals impart a clear, puristic vibrancy to the clear structural form.



Rocker switch LS 1912, chrome

Cubes



INTERNATIONAL

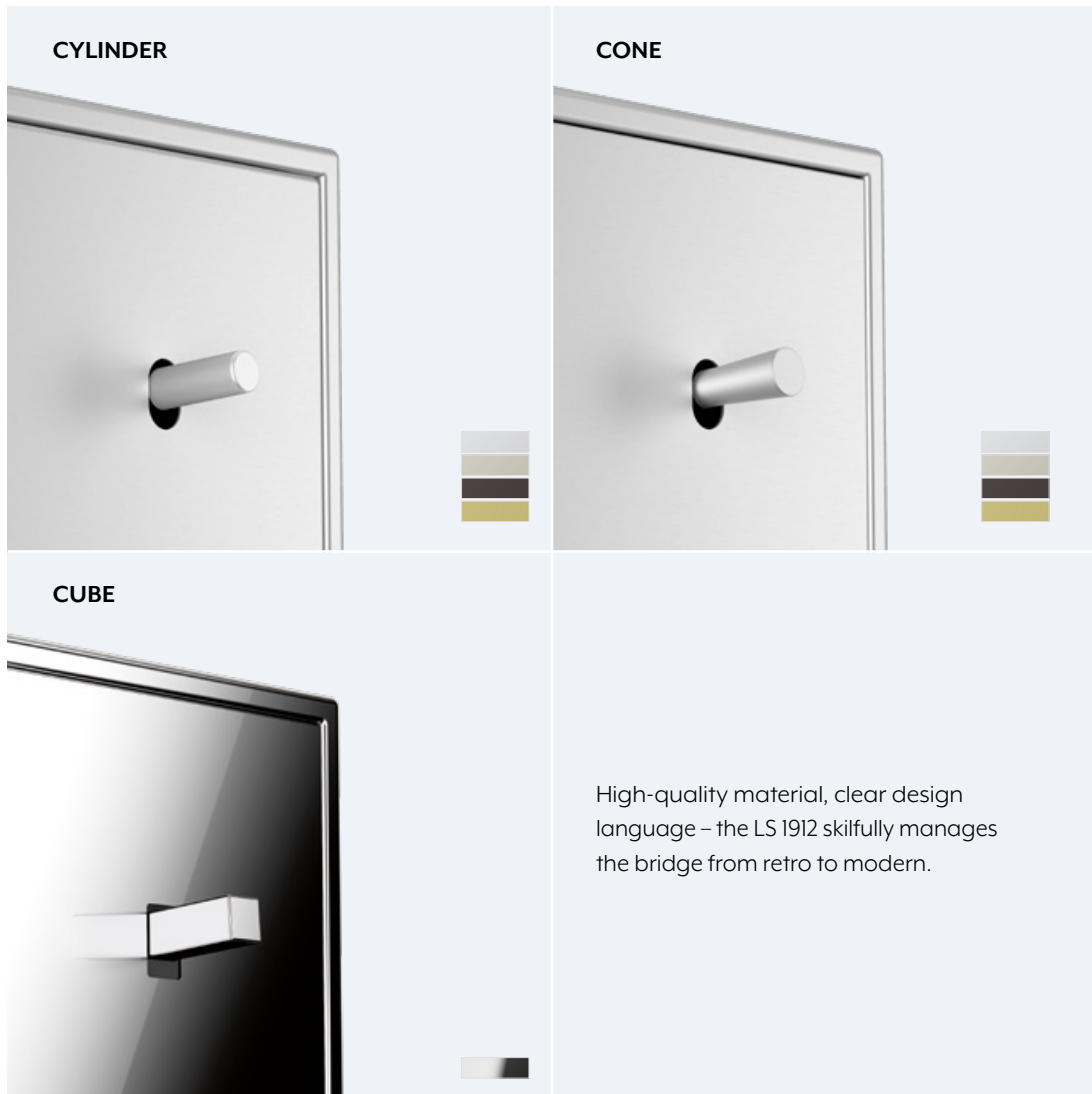
Over 200 inserts such as sockets, multimedia terminals and international systems extend the portfolio. Through the ability to combine with other JUNG systems and those of cooperation partners, stylish living concepts and individual hospitality solutions can be implemented with the LS 1912.



Variety

The LS 1912, with the multiple frames of the LS range, offers a wide range in the JUNG modular system.

Design language



Metal designs:

Aluminium
AlMg1 natural, matt etched



Stainless steel
1.4303 X4 CrNi 18-12 blasted with glass beads



Dark (varnished aluminium)

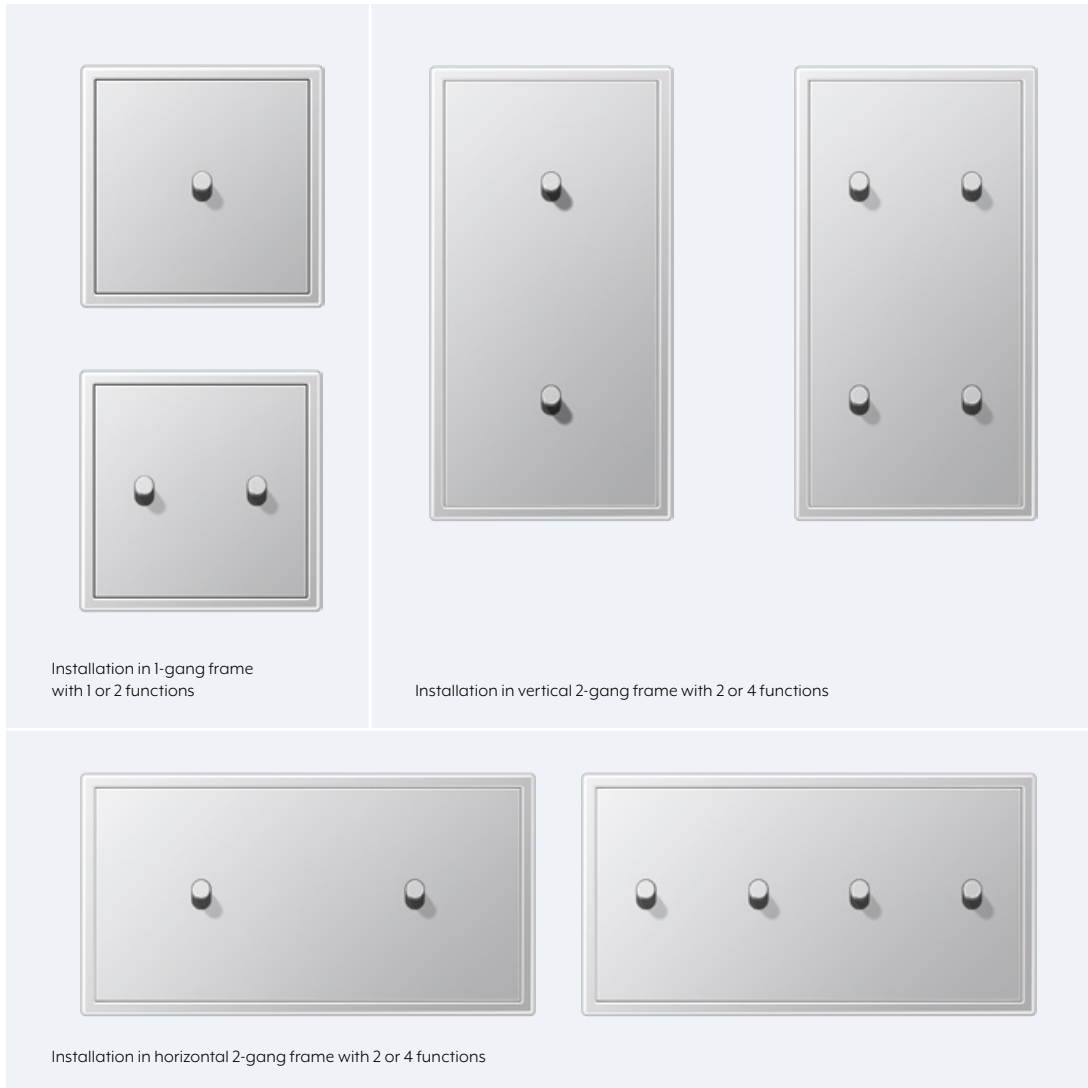


Chrome (chrome-plated metal)



Brass
CuZn37, bright, hand-brushed,
240 grain, clear varnish on both sides
(corrosion protection)





LS 1912 is the result of a convincing combination of traditional craftsmanship and contemporary technology.

ALBRECHT JUNG GMBH & CO. KG

P.O. Box 1320

58569 Schalksmühle

Germany

Phone +49 2355 806-553

Fax +49 2355 806-254

international@jung.de

For sales contacts in your country see:

jung-group.com/contact

JUNG-GROUP.COM